



52 Hammersmith Circuit Traralgon VIC

3 2 2

With a great open plan layout 52 Hammersmith Circuit in Traralgon is going to appeal to both buyers looking to downsize and investors searching for the perfect investment property.

Situated on a 526m2 allotment with the benefit of side access to facilitate additional shedding or caravan storage this townhouse style 3 bedroom home is a must to add to your inspection list.

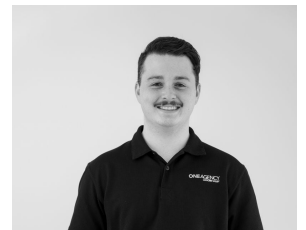
Features Include:

- Spacious open plan kitchen / dining / family room with vinyl plank flooring
- Kitchen includes gas hotplates with electric oven & dishwasher
- 3 well sized carpeted bedrooms, master features walk in robe & ensuite

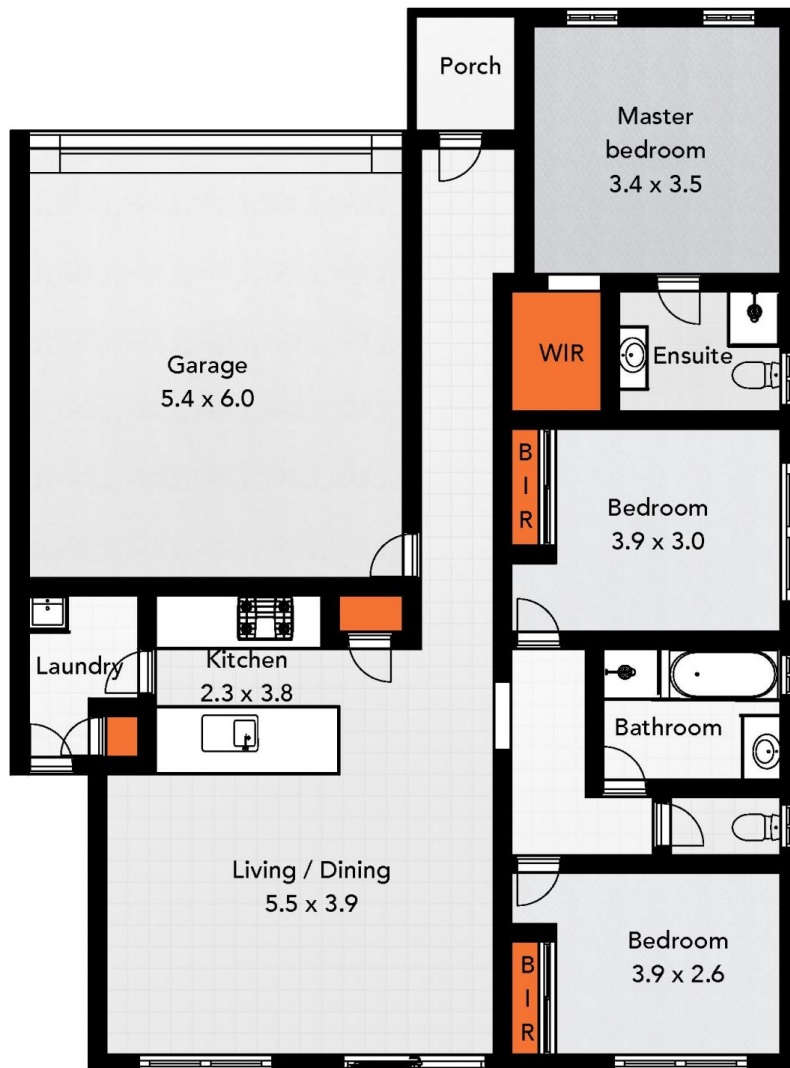
Price : \$535,000
Land Size : 522 sqm
View : <http://www.oneagencylv.com.au/sale/vic/gippsland/traralgon/residential/house/8071847>



Anthony Bloomfield
03 5174 2740



Josh Quigley
03 5174 2740



ONE AGENCY
LATROBE VALLEY